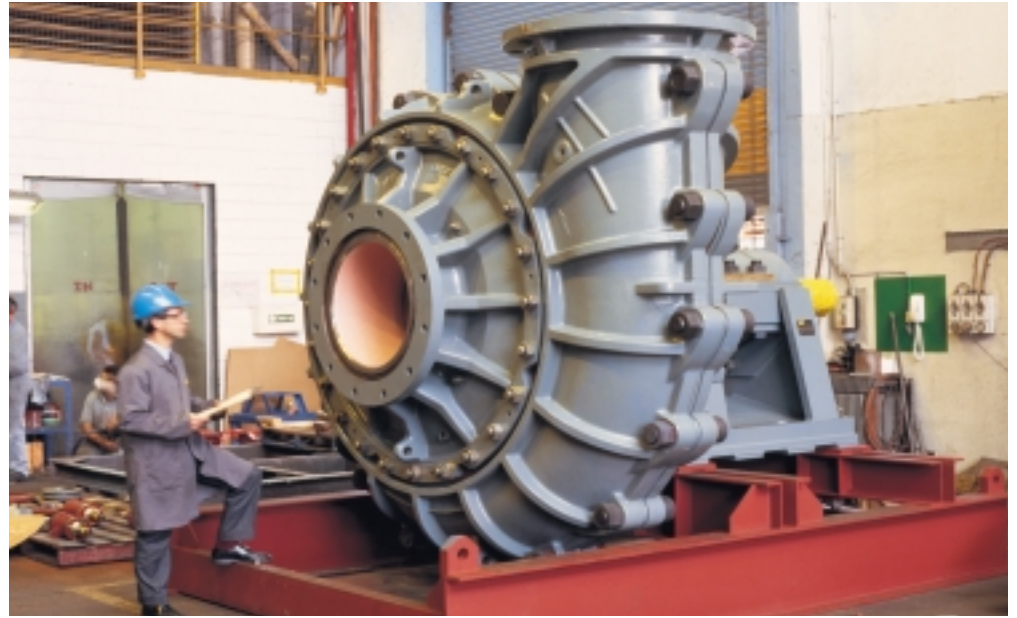


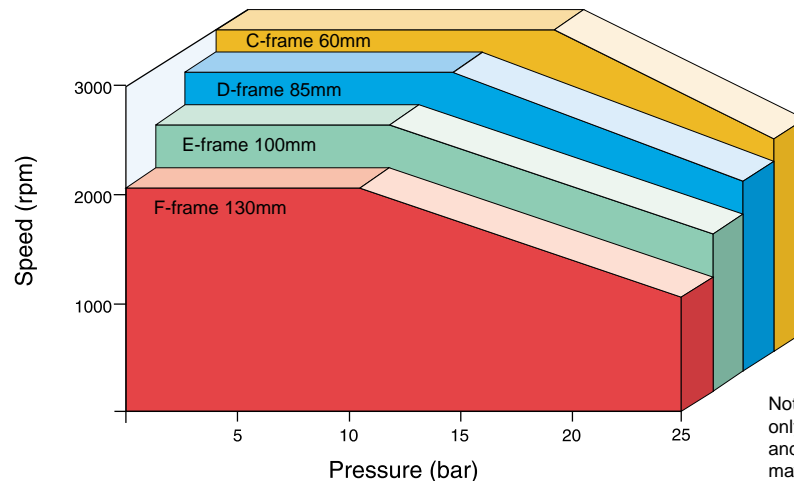
## SETTING THE MINING INDUSTRY STANDARD



Typical Heavy Duty Slurry Pump

Courtesy of Warman International

### PV Limits for Controlled Density Silicon Carbide



Note: figures are approximate only, based on material data and not seal testing; limits may be revised.



### Complete Mine-Site Maintenance

The John Crane 5860 Series of heavy duty slurry pump mechanical seals has been developed in conjunction with global slurry pump manufacturers and supported by our stock-holding warehouses and seal repair facilities in virtually all major industrial areas both national and worldwide.



**John Crane International**  
Engineered Sealing Systems

**Australia**  
549-551 Somerville Rd, Sunshine VIC  
Tel: 613 9289 4777  
Fax: 613 9289 4788  
Email: slurryseal@johncrane.com.au

**North America**  
Morton Grove, Illinois 60053 USA  
Tel: 1-847-967-2400  
Fax: 1-847-967-3915  
**1-800-SEALING**

**Latin America**  
Mexico City, Mexico  
Tel: 52-5-567-4511  
Fax: 52-5-587-2342

**Europe, Middle East, Africa**  
Slough, UK  
Tel: 44-1753-224000  
Fax: 44-1753-224224

**Asia Pacific**  
Singapore  
Tel: 65-222-9161  
Fax: 65-223-5035

**5860 Series**

[www.johncrane.com.au](http://www.johncrane.com.au)

# John Crane Slurry Pump Seal

HEAVY DUTY MECHANICAL SEAL FOR THE MINERAL PROCESSING INDUSTRIES

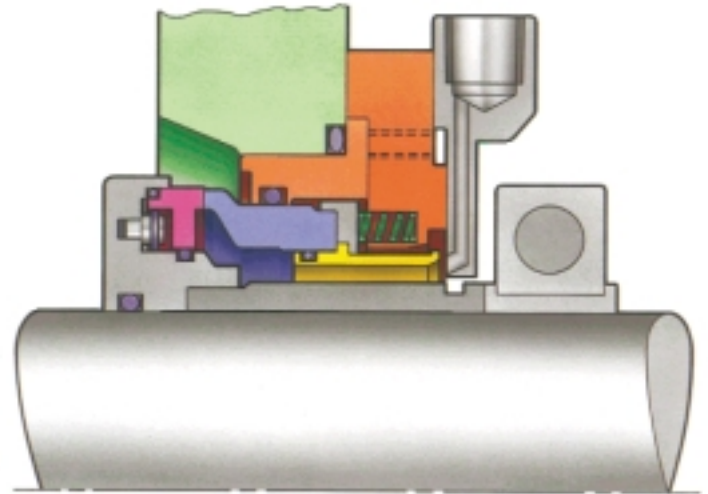


**John Crane**

**John Crane International**  
*Engineered Sealing Systems*

John Crane Type 5860 Mechanical Seals are rugged in construction, designed specifically for use in heavy duty slurry pumps throughout the mineral processing industry:

- Ore Recovery
- Flocculent Separation
- Treatment
- Tailings Disposal
- CIP Plants
- CIS Plants
- Transportation
- Screening
- Water Reclamation
- Wash Plants
- Dewatering
- Effluent Transport

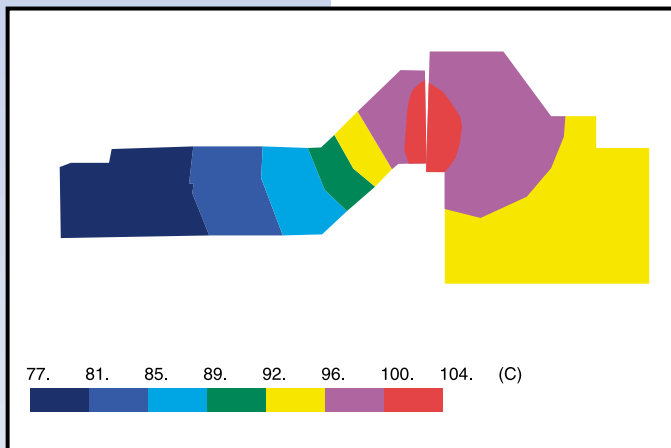


Unique design features eliminate problems common to sealing mining process fluids:

- Vortex formation
- Excessive face wear
- Product side hang-up
- Erosion and drive mechanism wear
- Atmosphere build-up of solids

Computer optimised seal faces are designed to provide maximum stability with minimum heat generation under adverse conditions expected when pumping heavy slurries.

New advanced silicon carbide is a controlled density material designed specifically for optimum performance with maximum seal face life and lubrication; proven to out-perform conventional carbide materials.



**Temperature Distribution Profile of Type 5860 Slurry Seal Faces**

**Operating Parameters\***

Seal pressure:	up to 30 BARG (441 psig) dynamic
Temperature:	up to 200°C (392°F)
Shaft speed:	up to 4000 rpm, depending on pressure & shaft size
Shaft sizes:	50-220 mm (to suit standard pump frame sizes)
Tolerance to axial movement:	up to 8 mm total, depending on shaft size

\*Call your local John Crane branch for duties outside the standard parameters.

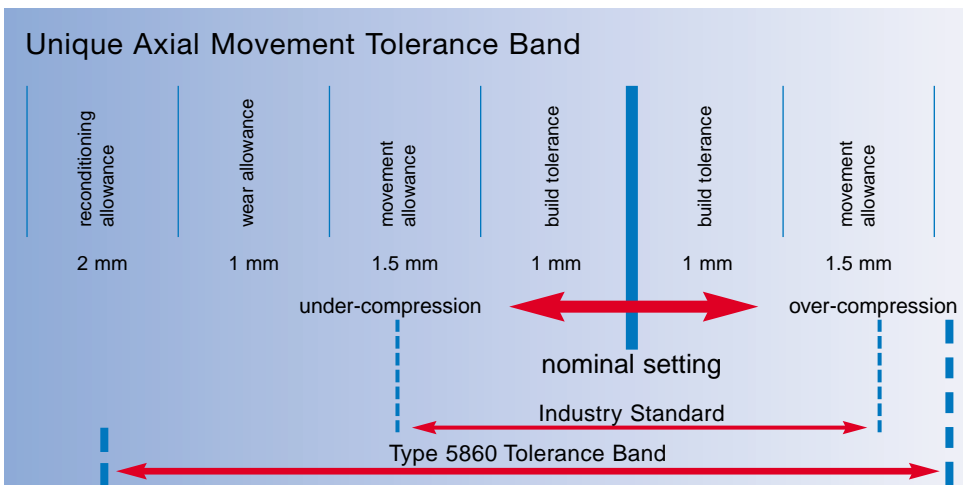
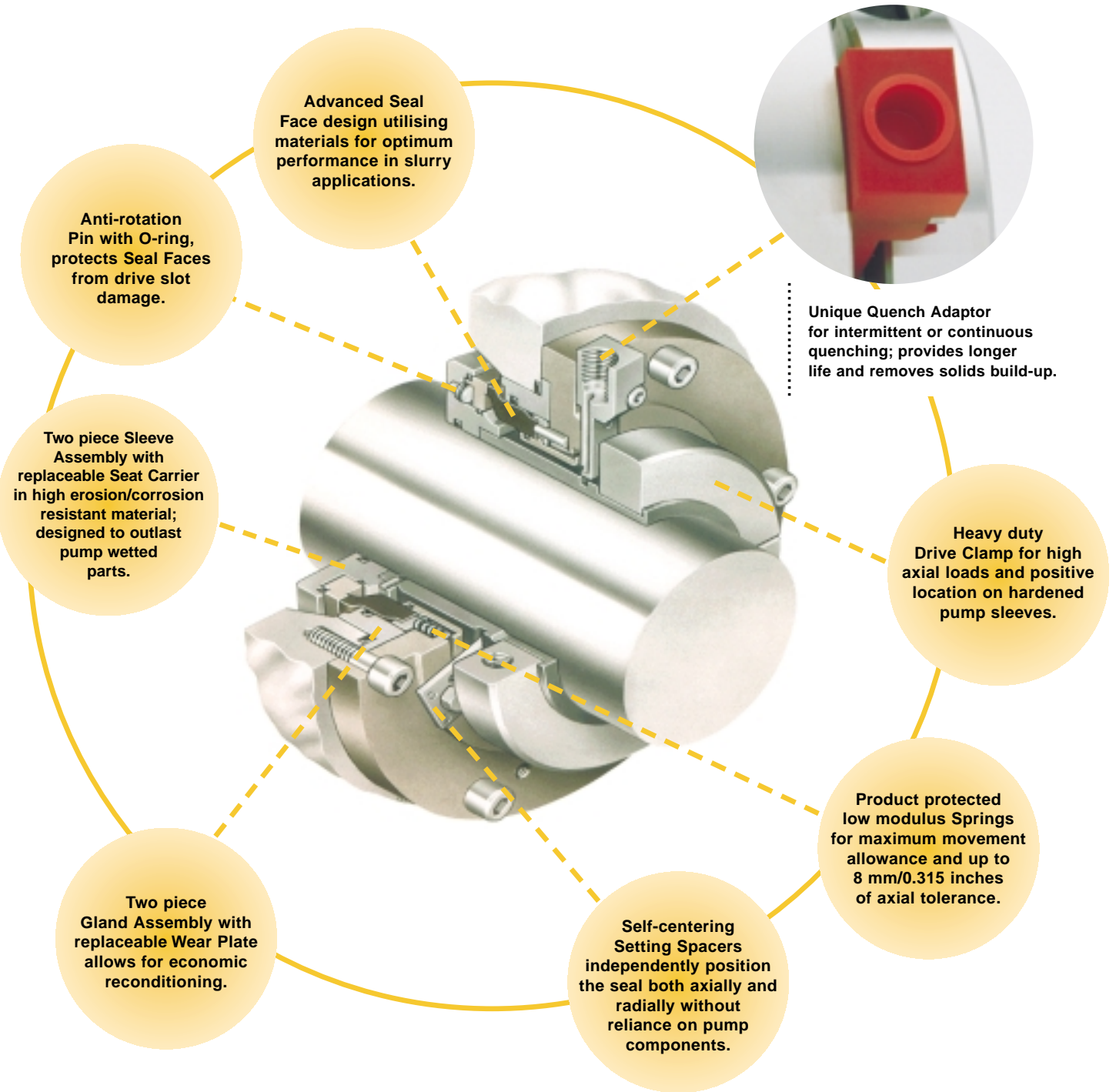
**Type 5860 Heavy Duty Design**

Optimised together with mineral slurry pump designs to meet your requirement for:

- Environmental Control
- Longest Operating Life
- Lowest Operating Cost
- Fault Free Installation



ENGINEERED TO BE THE PERFORMANCE LEADER FOR THE MINERAL PROCESSING INDUSTRY.



Axial movement allowance compensates for:

- Pump Build Tolerances
- Bearing Movement
- Wear/Reconditioning Allowance
- Shock Movements