

Heavy Duty Cartridge Seals SB2-PR launch

Heavy Duty Cartridge Seals



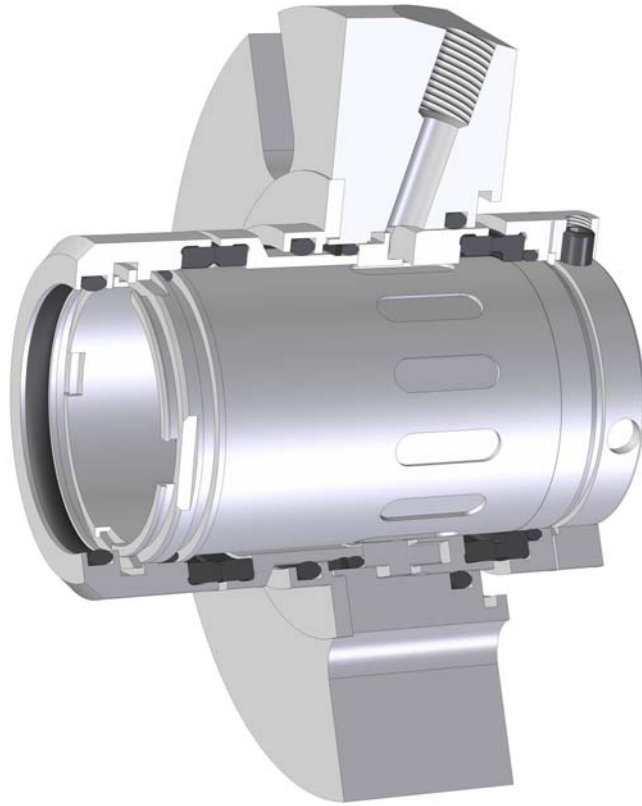
Type SB-seals for demanding applications



Type SB2-PR Double Cartridge Seal



- SB2-PR with integrated radial flow pumping feature



-Narrow cross section fits both ANSI and DIN pumps

-Big bore versions

-Special metallurgy versions at very competitive cost

Type SB2-PR Double Cartridge Seal



- Specially machined sleeve and guide ring
 - Pumping vanes machined into sleeve
 - Eccentric machined guide ring
 - Tangential water ports

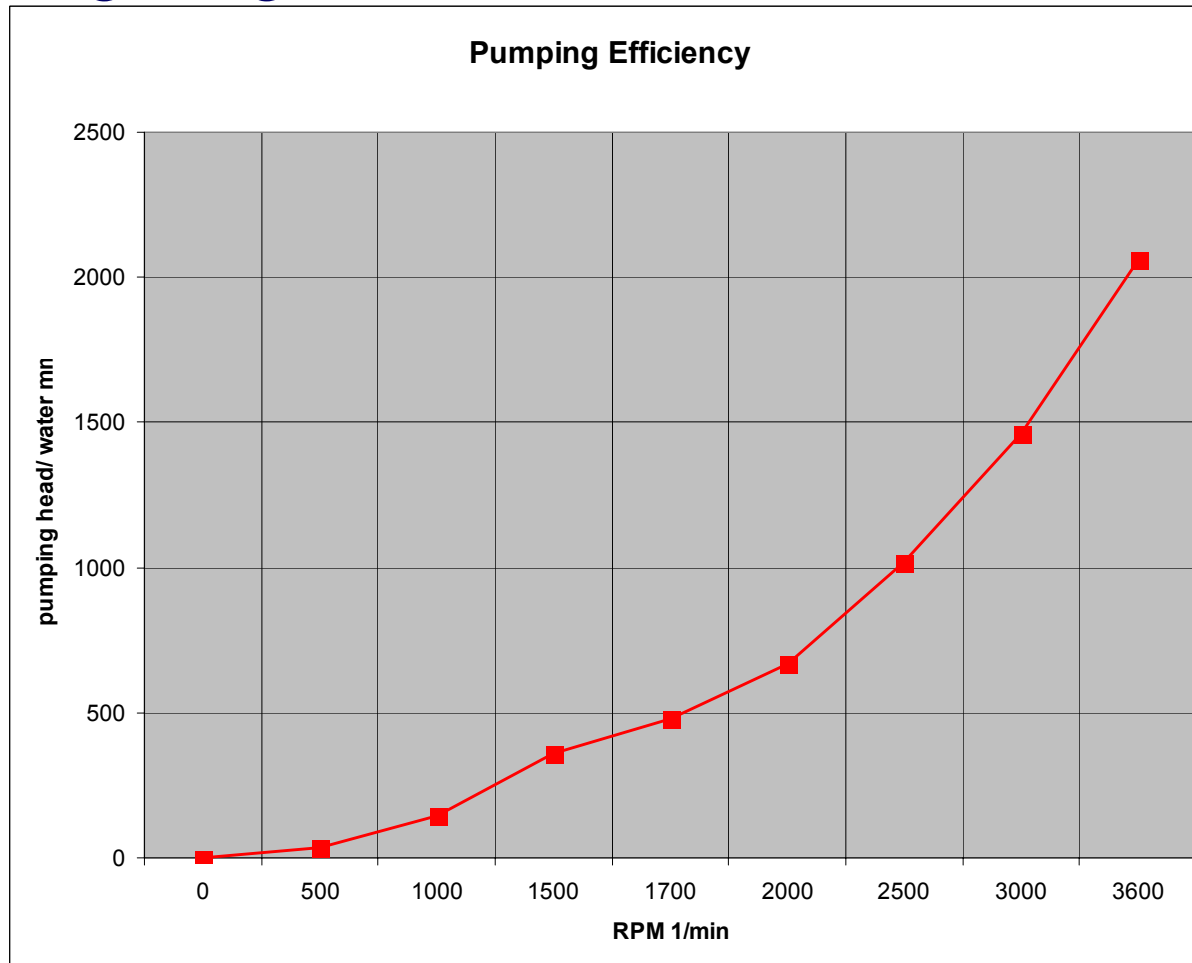


Results:
Excellent barrier liquid
circulation

Type SB2-PR Double Cartridge Seal



- Pumping height, water



Type SB2-PR Double Cartridge Seal



■ Technical Specifications

- Stuffing box Pressure 20 bar (290 Psi) max
- Barrier fluid pressure 15 bar (215 Psi) max.
- Velocity 20 m/s (65 ft/s) max.
- Temperature 180 °C (350 °F) max.

■ Materials

- Seal faces: SiC/SiC; SiC/Carbon
- O-rings: PTFE, EPDM , Viton®, others as options
- Metallurgy: AISI 316/ 329 as standard
Titanium, Alloy 20, Hastelloy available
- Springs: Nimonic steel

Type SB2-PR Double Cartridge Seal



- Size range
 - metric 25mm...130mm
 - imperial 1" ...5"
- Price
 - 1,15 x SB2A price
 - 1,15 x SB2B price
 - 1,15 x SB2S price
- Assembly drawings will be generated upon requests
- Availability 3-4 weeks after order (std. materials)