

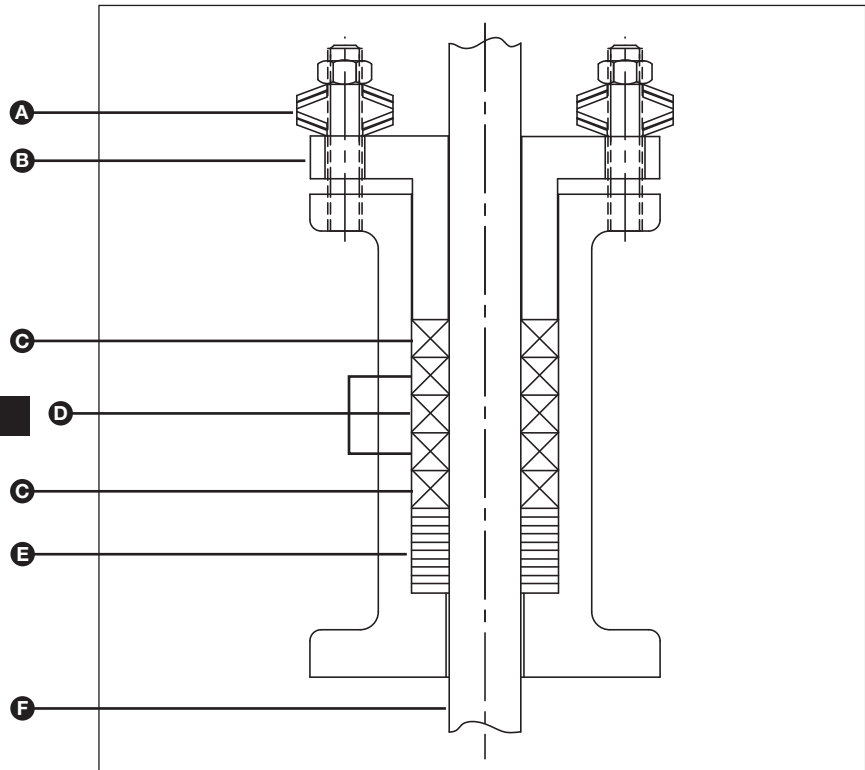


Live-Load

Valve Stem Packing

Live-Load

- A – Belleville Springs
- B – Gland Follower
- C – End Rings
- D – Sealing Rings
- E – Spacer Bushing
- F – Shaft/Stem



Industries Served

- Chemical Processing
- Fossil Fuel
- General Industry
- Nuclear Power
- Oil & Refinery
- Petrochemical
- Power Generation
- Pulp & Paper
- Utilities

Minimal Gland Adjustments Required

Benefits

- Reduce Maintenance Cost
- Control Emissions
- Self Adjusting
- Equalized Loading
- Reduced Number of Rings Required for Deep Stuffing Boxes
- Ideal for Valves in Remote or Hard to Reach Locations

Design Features

- Trained Technical Support: Sales/service engineers provide training programs, on-site surveys, and supervise installations.
- Design and Application Engineering Support
- Computerized Live-Load Program: Calculates proper load data for disc spring selection, configuration, and gland nut torque.
- Optimum Packing Materials: Utilizes die-formed Crane-foil™ packing rings for longer sealing life, resulting in less corrosion in the box and less leakage in the valve. Highest quality braided graphite or carbon fibers serve as wiper rings and anti-extrusion rings. High compressive strength graphite spacer.
- Belleville Springs: Maintain packing compression above the minimum sealing pressure as packing relaxes and wears.
- Nuclear Certifiable Materials: Materials can be certified to meet demanding nuclear service purity levels of low chloride, fluoride, halogens, sulfur and embrittled metals.



NOTE: For additional application or product information, contact your local John Crane representative or John Crane Customer Service at Tel: 800-647-2548; Email: packing@johncrane.com; Fax: 1-847-967-3513.



Live-Load

Valve Stem Packing

Materials of Construction

SEAL COMPONENTS	STANDARD MATERIALS	
	Commercial	Nuclear
Belleville Springs	17-7PH Stainless Steel	17-7PH Stainless Steel
Packing Rings	Crane-foil 235 A*, B**, or C*** Crane-foil 267 A*, B**, or C*** Crane-foil 267W A*, B**, or C***	N261 A*, B**, or C*** N267 A*, B**, or C*** N267W A*, B**, or C***
Braided End Rings	1625G 1627 G58 G58I	N1625 N1635
Spacer	9004 Graphite	9005 Graphite

- *A = Endless
- **B = Single Split
- ***C = Double Split

NOTES: Refer to John Crane Datasheets S-EPS and S-VPS for additional valve packing specifics. Contact your local John Crane representative for more information concerning the Live-Loading of your rotating equipment.



North America
Morton Grove, Illinois USA

1-800-MGPAKIT (1-800-647-2548)
Tel: 1-800-221-7833
Fax: 1-847-967-3513

Europe
Slough, UK

Tel: 44-1753-224000
Fax: 44-1753-224224

Latin America
São Paulo, Brazil

Tel: 55-11-3371-2500
Fax: 55-11-3371-2599

Middle East, Africa, Asia
Dubai, United Arab Emirates

Tel: 971-4-3438940
Fax: 971-4-3438970

smiths

For your nearest John Crane facility, please contact one of the locations above.

If the products featured will be used in a potentially dangerous and/or hazardous process, your John Crane representative should be consulted prior to their selection and use. In the interest of continuous development, John Crane Companies reserve the right to alter designs and specifications without prior notice. It is dangerous to smoke while handling products made from PTFE. Old and new PTFE products must not be incinerated.